

JINPU Vertical Turret Milling Machine

M5 Series 11x54 or 12x54 Table - 5Hp - Box Ways



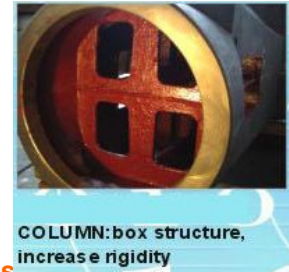
STANDARD

FEATURES

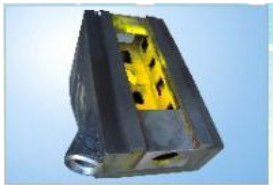
Tested Quality - ISO 9001 Certified
 3 Hp 3-Phase 220/440VAC Spindle Motors
 Hard Chromed Powered Quill - Up and Down - Feed Select: 0.0015, 0.003, 0.006 in/rev
 Tempered and Carburized Chrome Molybdenum Steel Spindle
 NSK or Nachi ABEC-7 Angular Contact Precision Spindle Bearings
 R8 or NT30 Spindle Taper - 100% Factory Test Data Provided
 Ram Rotation (Deg) 90 left/right, 0-45 front/back*, 360 Orbital
 Induction Hardened & Precision Ground Table & Ways
 PBC-2 Phosphor Bronze Backlash Adjustable Lead Screw Nuts
 Full Length Precision Ground Gibbs with Double End Adjustments
 Turcite-B X&Y Saddle Ways - Precision Hand Scraping Throughout
 Widest Knee - T-Slots (3 x 0.63 x 2.48") - Way Guards - Double Travel Locks
 Control Box with 110/220VAC Outlets - On/Off/E-Stop Switch Box and Indicator Light



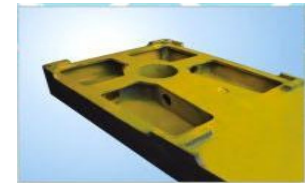
Extended Turret



COLUMN: box structure, increase rigidity



KNEE: double wall structure,



BOTTOM: box structure,

Manual 1-Shot Lubrication System - Automatic Optional
 35 Watt Halogen Work Lamp - 50 Watt Optional
 Draw Bar, Tool Box With Operation Manual And Test Data
 Includes Leveling Pads - Lift Eye - Rear Ram Eye
 SC250 Superior Rigidity - Uniquely Structured Castings

ONE YEAR LIMITED WARRANTY

Specifications subject to change without notice
 See dealer for details

		BOX WAY		Knee	Quill	RAM
Table	Machine Travels(inch)	X	Y			
11x54	No Power Feed	35	17.91	18.11	5	24
	With Power Feed	30.32	17.91	18.11	5	24
12x54	No Power Feed	35	16.93	18.11	5	24
	With Power Feed	30.32	16.93	18.11	5	24

Base Machine Weight 3,300 Lb

Machine Dimensions 59"x71"x91"

Model # **M5-S**

16 Speed Step Pulley Spindle Head
 70 - 4620 RPM

STOCK OPTIONS

Model # **M5-V**

Variable Speed Spindle Head
 60-4200 RPM

UPGRADES & ACCESSORIES:

Power Feeds
 Digital Readouts
 CNC Retrofit Kits
 50 Watt Halogen H3 Work Lamp
 Coolant System With Chip Pan
 Auto Lube System
 Power Drawbar
 NT30, NT40 Spindle Tapers
 Vices, Collet and Clamping Kits
 Safety Hand Wheels
 Cutter Shields



Established in 1986 in Hong Kong, Kin Ah Industries has expanded to a group of four machine tool manufacturing facilities in China including two foundries covering over 100 acres and 60,000 square meters of floorspace. A fully family owned and operated manufacturing group, Kin Ah manufactures Manual Milling Machines under the Jinpu label and CNC Machines under the SAN label. Core capabilities include Iron Casting, Heat Treatment, Machining, and Precision Assembly. Products include Vertical Turret Milling Machines, Bed Type Milling Machines, CNC Milling Machines, Machining Centers, CNC Lathes, EDM and Accessories.